

# Welcome to SGS Gallery & Art Shop

**SGS Gallery and Art Shop's** exhibition plan for the 2010 season was versatile and inspiring, and already now, our multifaceted [exhibition plan](#) for the summer of 2011 has been well received by our many visitors.

**SGS Gallery and Art Shop** is widely acknowledged and cooperates with the art association "Kulturparaplyen", please see [www.kulturparaplyen.dk](http://www.kulturparaplyen.dk)

The old school at Sødtring houses our gallery and the symbiosis of premises and art is perfect for our different artists.

You will find more information on the different web pages of [Galleri-sgs.dk](http://Galleri-sgs.dk)



We have already finished our first exhibition in 2011, and the gallery bids you welcome to the summer season of 2011. Looking from our gallery windows, you will experience a beautiful view of the sea and Randers Fiord.

Visiting us is therefore always a good experience. Please see the [map](#).

**We look forward to welcoming you at our gallery.**

**Opening hours: Thursdays-Sundays from 1 p.m. till 5 p.m.** Mondays, Tuesdays and Wednesdays are closed.  
Special opening hours are possible by agreement, please call us by phone +45 86 47 22 43.

**Contact us** by phone: +45 86 47 22 43 - or send us an email: [sgs@pc.dk](mailto:sgs@pc.dk)

# Galerie SGS



## Exhibition plan for the season ending October/November 2011

Please click the name of the artist for more information

[Rasmus L](#)

[Josef Salamon](#)

[Hanne Sie](#)

[Gitte Valentiner-Brandt](#)

[Jette Guldberg](#)

New activity: **Watch the stone cutter at work.**

During the summer 2011, Rasmus L. will create art from a large stone placed outside the gallery.

Our season plan is dynamic. Please keep an eye on our web site—there may very well be **surprises** in store for you!

**Welcome to SGS Gallery 2011**



**Gitte's childhood was full of horses, dogs and drawing.**

**When she was not on a horseback, or walking in the forests of Vaserne with her dog, she was painting non-stop to the sound of either classical or rock music.**

**The world must be challenged, explored and beautified, and Gitte's paintings typically address those who venture a bit more, those with profounder depths than what they express—and those who dare express their opinions.**

**In short, it can be said "hang up your self-esteem on the wall", - that is how Gitte feels. But her art also addresses those who want beauty, as beauty is the basis for a calm and balanced mind.**

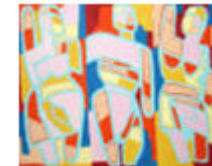


Hanne Sie, <http://www.hannesie.dk>



I'm working with paintings, watercolour art, chalk drawings, graphics and sculptures. Colours are the most essential element in my work, and I am especially focused on bright, clean and pure colours, which through their power invigourate my heart and make my mind wander.

My sources of inspiration are manifold, but often the pictures are made inside my head, inspired, however, from impressions from my journeys, people around me and nature.



Recognition in my paintings is of minor importance compared to the moods and feelings in experiencing the visual expression.

Like a poet, I try to condense my different experiences and sensory impressions to one, comprehensive expression. At the same time, I would like to maintain the nuances and the commonality so that the experience is open to the spectator's participation and fantasy.

To a varying extent, the form is abstract, and I work with enthusing colours in lyrical, sensory, sunny and aesthetic paintings, which contrast warm and cold, and in which all elements in the composition gain equal weight or importance.

The power behind my work is the hope and the longing for life, light, colours, harmony, intimacy, beauty and joy, which I hope to convey to the spectator.

[Back to Galleri-sgs.dk menu](#)

**Jette: I started with transcendental meditation in 1972 and since then I have found other forms of Osho-techniques. These expand my creativity and existence in the moment.**

**My journeys to India, with among other things long meditation retreats, have inspired me to my spiritual paintings, where I can also use crystals which I encode with reiki. I was educated at acknowledged art schools and I have displayed my work at the Spring Exhibition at Charlottenborg.**



[Back to galleri-sgs](#)

**Josef  
Salamon**



**Josef Salamon**

Sculptor and graphic artist – Born in 1932 in Transylvania, living in Denmark since 1960. Educated in Italy and Copenhagen. A member of the Danish Sculptors' Society and the Visual Artists Ireland. Represented internationally. Basically works with decoration in connection with landscapes and architecture. Makes terracotta portraits and works in stone and bronze. Decoration tasks: Numerous Danish and international works.

[Back to Galleri-sgs.dk](http://www.galleri-sgs.dk)

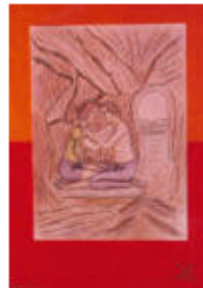
**Rasmus L**

Rasmus Lauridsen, 1943 in Dalbyover geboren.

Telefon: 86473029

E-mail: [rasmus.lauridsen@yahoo.dk](mailto:rasmus.lauridsen@yahoo.dk)

Web: [www.galleri-sgs.dk](http://www.galleri-sgs.dk)



. Educated as an artisan painter, he always

worked with a clear focus on art projects. Rasmus Lauridsen is a self-taught multiartist, also fascinated with working in stone. He lets the substance of the stone express itself in the final sculpture. At the Sødtring exhibition, Rasmus Lauridsen will reveal art in a style entirely new to him.



## Ingrid Smerl

Self-taught painter – Born in Svendborg in 1947 – where she grew up and lived most of her life.

She was trained as a radio operator and has sailed worldwide with the shipping company of A.P. Møller as a radio officer.



Ingrid has drawn and painted as long as she remembers – even from her pre-school age. And she is still painting, and probably will paint till the end of her days.



Ingrid has taught porcelain painting as a volunteer in evening classes. For many years, she was the deputy chairperson of the art association "Nørhald Kunstforening". She usually displays her works with her group "Paletten" (Rasmus Lauridsen), but this time she displays her work separately.



I. Smerl

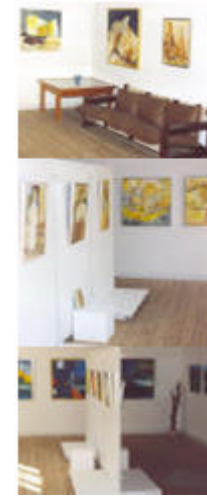
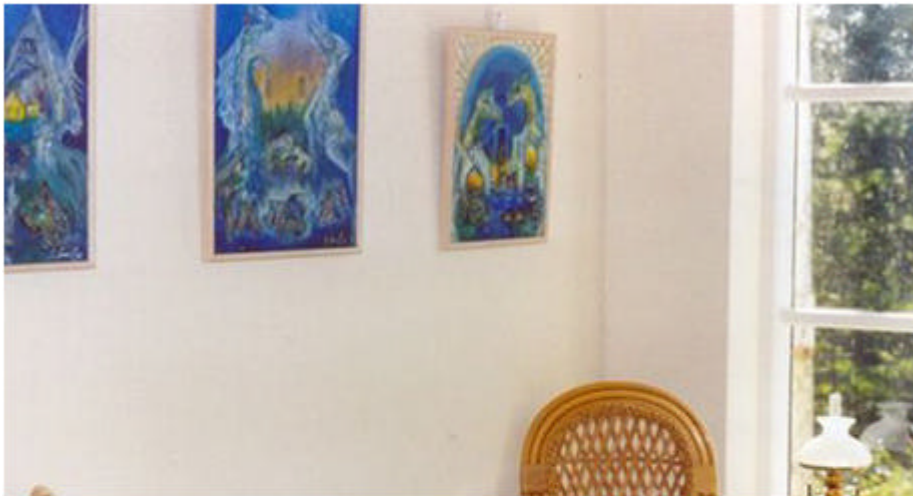
Telephone: +45 86441369

E-mail: [boerboel5@yahoo.dk](mailto:boerboel5@yahoo.dk)

web: [www.galleri-sgs.dk](http://www.galleri-sgs.dk)

## *Galleri Sødning Gl. Skole* at the Old School of Sødning

Our inviting premises are home to changing exhibitions with artists who share the joy of creating art. The village of Sødning and the old school, Sødning Gamle Skole, are ideal surroundings for art made by diligent and creative artists working in unison with Mother Nature, which results in multifarious pieces of art. Our hallmarks are experiences and harmony.



[Back to Menu](#)

## Gallery SGS



Galleri-SGS found its perfect environment at **S**ødring **G**amle **S**koale, which is an estate consisting of a main building, a side-building (1830), and the school building from 1900. To many generations of people living at Sødring and Udbyhøj, the building was the village school and was the cultural centre of the region. In its last years as a school, Sødring Skole was a primary school for pupils up to 4<sup>th</sup> grade. For a period before Sødring became too small to have its own school, primary classes were given at the now closed dairy. Sødring has been without any village school since 1967.

After being used as a school, the building had different functions. For some years, the school even functioned as a carpenter's workshop, and frankly speaking, during a period the building suffered from lack of maintenance. However, this situation changed when painter and artist Henning Højlund moved into the school buildings in 1997.



After finishing his A-level exams on the special art line, and after being educated in art, there was too little space at his family house in Randers. Henning Højlund therefore bought Sødring Gamle Skole to get space for his creativity.

The sunny and bright rooms of the building were fantastic and the organization of the house called for opening an art gallery. An extensive renovation project inside and outside the building has now ensured the right surroundings for working at the gallery, which in the summer of 1998 featured its first exhibition and art opening. Since then, Gallery SGS has hosted exhibitions with various artists and has been a great success, and the gallery is today a very well-acknowledged and well-established gallery.

From the gallery, there is the most wonderful view of the unforgettable environment. For many reasons, a visit to Sødring will therefore be a memorable event.

Link to [www.kulturparaplyen.dk](http://www.kulturparaplyen.dk)

## Artists who have exhibited at Galleri Sødring Gl. Skole

<p><b><a href="#">Kirsten Axelsen</a></b> September and October, 2004</p>	<p>Kirsten Axelsen paints in beautiful, warm colours with a slight touch of coolness. She is an abstract painter, but with a recognizable reminiscence of 'the natural'. Shapes and colours are expressed fully in Kirsten Axelsen's paintings.</p>	
<p><b>Kaisu K. Salmia</b> Eco-weaving – natural materials, which are processed and woven into textile pictures, carpets and sculptures. June, July and August, 2004</p>		
<p><b><a href="#">Ulla Sjørvad</a></b> April and May, 2004</p>	<p style="text-align: center;">Glass art</p>	
<p><b><a href="#">Ulla Bille</a></b> (October and November, 2004)</p>	<p>Ulla Bille is a skilled and renowned portrait painter and pictorial artist. She has made a name for herself, especially within portrait painting.</p>	
<p><b><a href="#">Marguerite Johnsen</a></b> (October and November, 2004)</p>	<p>Marguerite is a skilled and versatile ceramics artist spanning all the way from classical art to abstract art.</p>	
<p><b><a href="#">Ingrid Smerl</a></b> (March and April, 2005)</p>	<p>Ingrid is an abstract painter and works with acrylic paints and watercolours.</p>	
<p><b><a href="#">Birthe Dalsgaard</a></b> (March, April 2005)</p>	<p>Birthe is a versatile pictorial artist, who works with lovely, warm colours in architechtonic structures.</p>	
<p><b><a href="#">Karl-Heinz Boserup</a></b> (March, April 2005)</p>	<p>Karl-Heinz is a sculptural artist, with special sculpture works in iron.</p>	
<p><b><a href="#">Birthe Breum Rasmussen</a></b> (May, June, July and August 2005)</p>	<p>Birthe works with different cold glass techniques, such as fusing, slumping, paint and sand-blasting.</p>	
<p><b><a href="#">Birthe Andi Kouring</a></b> (May, June, July and August 2005)</p>	<p>Birthe is a pictorial artist, whose style varies from almost naturalistic to completely abstract art.</p>	
<p><b><a href="#">Jytte Dunck Pedersen</a></b> (September, October and November 2005)</p>	<p>Jytte is a multi-artist with oil paintings, collages, drawings, graphics and sculptures.</p>	
<p><b><a href="#">Adolf Meister</a></b> (May, June, July og August 2006)</p>	<p>Adolf performs both as a pictorial and a portrait artist.</p>	
<p><b><a href="#">Gerda Barslund</a></b> (September, October and November 2006),</p>	<p>Gerda is a pictorial artist using strong colours in her abstract and natural paintings.</p>	
<p><b><a href="#">Ely Hald</a></b> (May, June, July and August 2006)</p>	<p>Ely is a pictorial artist with a versatile work field. Among other things, she works with collages, paper cuttings and weaving.</p>	
<p><b><a href="#">Cristel Oddermose</a></b> (Summer and Autumn 2007)</p>	<p>Cristel is a pictorial artist with a versatile work field, inspired in most of her work by nature and the Danish</p>	

	west coast.
--	-------------

<a href="#"><u>Lisbeth Bødker</u></a> 2008 season	Lisbeth is a multifaceted glass worker with productions of vases, bowls and figures.
<a href="#"><u>Marie Caspersen</u></a> 2008 season	Marie works with paintings and has made pictures, posters, etc. She is very much inspired by the world of music and circus artists.
<a href="#"><u>Søren Hauge</u></a> 2008 season	Søren is a self-taught pictorial artist, who paints both naturalistic and abstract paintings. He shuns conformity, which is seen in the diversity of this work.
<a href="#"><u>Maltha Hjorth</u></a> 2008 season	Maltha is a multi-artist. Having a background in rock music, he now produces provocative art.
<a href="#"><u>Rasmus Lauridsen</u></a> 2008 season	Rasmus is fascinated by the possibilities of stone. His ability to see shapes in stone has resulted in beautiful works of art in stone.
<a href="#"><u>Louise Maagaard</u></a> 2008 season	Louise is a master of working both traditionally and experimentally with ceramics works. Her work spans from bowls to candle holders to more experimental forms.
<a href="#"><u>Kent Zahl</u></a> 2008 season	Kent is known for his sculpture work. He masters the art of shaping and reshaping into different forms that intrigues mind and imagination.
<a href="#"><u>Anne Kjaerulff</u></a> 2009 season	Anne works with pictorial art focusing on clear colours, inspired by light, energy and growth. Her materials are oil and acrylic paintings.
<a href="#"><u>Bent Madsen</u></a> 2009 season	Bent is a self-taught sculptor. His work spans from cubism to organic shapes. He works in stone, bronze and often contrasts the natural expressions in materials with the highly processed forms.
<a href="#"><u>Tine Laulund</u></a> 2009 season	Tine is a pictorial artist. The basic element is the fabulous forms in nature, as well as paper layers as the basis for bowls and pots.
<a href="#"><u>Mariann Thymann Schoop</u></a> 2009 season	Mariann is a painter with focus on strong, bright colours. A closer look at her abstract art unveils hidden, yet obvious motives. For inspiration, see <a href="http://thymannschoop.dk/">http://thymannschoop.dk/</a>
<a href="#"><u>Pia Jønsson</u></a> 2009 season/10	Pia is a pictorial artist. She holds a Master's degree in literature and films, has been a visiting student at the department of Visual Communication at the School of Architecture
<a href="#"><u>Tina Lunde</u></a> 2010 season	Tina is a multi-artist. The choice of warm colours expresses joy of life in her glass works.
<a href="#"><u>Lisbeth Bødker</u></a> 2010 season	Lisbeth teaches art and performs as a glass artist with a versatile production.

<p>Always possible to make a special arrangement for you. We are looking forward to seeing you!</p>	<p>Feel free to call phone: +45 8647 2243 Bodil &amp; Henning Højlund</p>
---	---

Information on [www.galleri-sgs.dk](http://www.galleri-sgs.dk)

[Zurück zur Startseite](#)

SGS - Galerie und Kunst-Shop  
Sødring Bygade 22,  
Sødring bei Udbyhøj N  
DK-8970 Havndal